

Company Profile

AREMATES - AL RANA EQUIPMENT & MACHINES TRADING LLC

Engr. Bassam Nowfal, Founder & Chief Executive Officer
Since 1990





ABOUT US



Overview

AREMATES was established in May 1990 as a privately held firm in Sharjah and comprises of more than 65 employees. Our company primarily focuses on specialized equipment such as tower cranes, passenger and material hoists, suspended working platforms, cradle and concrete placing booms.

We serve both local (UAE) and international markets by offering sales, rentals, services (encompassing repairs, mobilization, demobilization, erections and dismantling), as well as maintenance and spare parts for all supplied equipment.

Our highly qualified and experienced team allows us to engage in a wide range of construction and industrial projects. Backed by broad industry knowledge and years of experience, AREMATES has built a strong track record of success. As a business, we believe that the key to growth lies in fulfilling our clients' needs. For that purpose, we continually strive to improve our efficiency and reliability to better serve our consumers.

Why Choose us ?

- Our reputation as a reliable business partner is built on:
- A skilled and qualified workforce.
- Competitive pricing for both equipment and services.
- Extensive experience and strong industry expert is on lifting and earthmoving equipment.
- Premium products.
- Machinery and materials are of excellent condition, whether opting for new or used.

VISION & MISSION

OUR VISION

We strive to be a leading and trusted establishment known for excellence and reliability to our clients.

OUR MISSION

Our mission is to guarantee our clients receive the best values for our products and to rigorously provide high-quality services and maintenance while abiding by the criteria set by the International Organization for Standardization.

CORE VALUES

COOPERATION

Cooperation is the foundation of how we work and flourish as a whole. At Aremates, we believe in fostering an environment where individuals and teams support one another. As a guiding principle, we embody this through the commitment of working together with purpose and determination, partnering closely with both our colleagues and clients to achieve our shared goals. Cooperation is essential to our success and this is founded on mutual respect, trust, and open communication. Through collaborative efforts, we empower our people to reach their highest potential and contribute meaningfully.

COMMITMENT

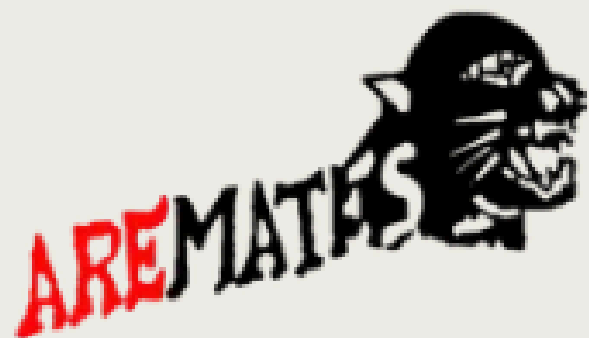
Commitment drives everything we do, it is at the heart of our operations. At Aremates, we hold ourselves accountable to the highest standards in our services, maintenance and client relationships. Client satisfaction is recognized as one of the primary metrics to our success and we pursue this through consistency, reliability, responsiveness, as well as attention to detail. By actively understanding our clients' needs, we are able to undertake continuous improvements that build on trust and long term partnerships.

INTEGRITY

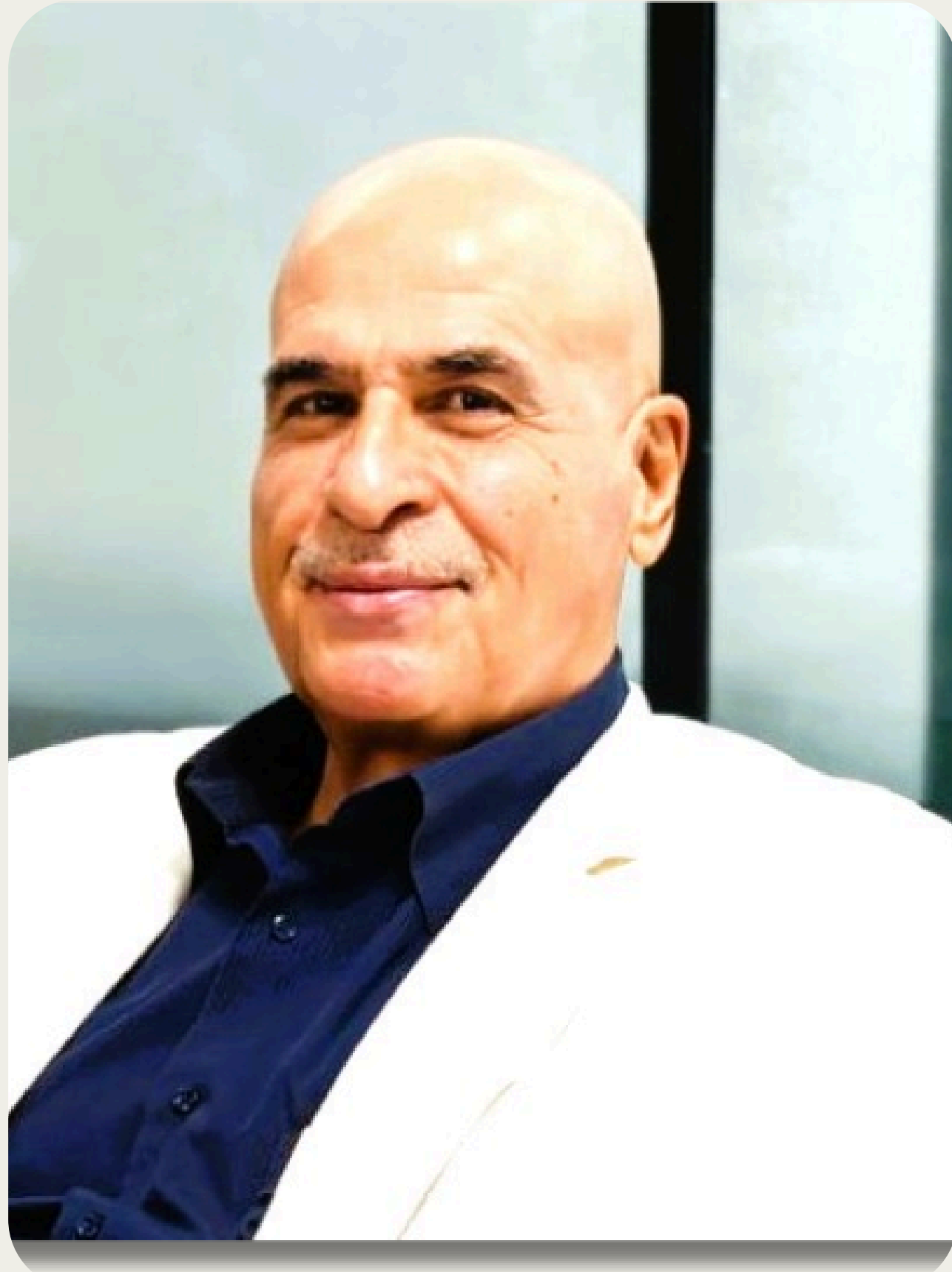
Aremates prides itself on embracing the principle of integrity. We are an establishment that upholds honesty, transparency and professionalism across all areas of our business. Adhering to this practice allows us to ensure a positive work environment while upholding authentic and reputable relationships amongst our clients.



COMPANY ORGANIZATIONAL CHART



LEADERSHIP

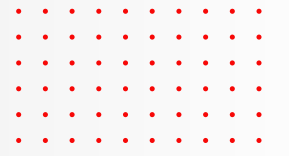


OUR FOUNDER & CEO

Engineer Bassam Nowfal is the founder and current owner of AREMATES. Starting off as a Mechanical Engineer, he dedicated his time to working in the field and advancing his career. Early on, he joined Arab Gulf Equipment (AGE) in Dubai as a service manager from 1986 till 1989. AGE served as an authorized agent for Liebherr and Potain Tower Cranes whilst operating a diversified business that included earthmoving machinery and mobile cranes. By 1990, Engineer Bassam Nowfal launched 'AREMATES' and has since accumulated decades of mechanical and technical experience. Through his leadership and commitment to excellence, the company earned a strong reputation for quality, reliability and customer satisfaction. He firmly believes that long term success is driven by dedication, integrity, professionalism, cooperation and a passion for continuous improvement on performance and services. Engineer Bassam Nowfal remains dedicated to the company and continues to play a significant role in its development and management.

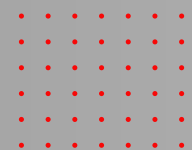


LEADERSHIP



MOHAMMAD NOFAL, CHIEF OPERATING OFFICER

Engr Mohammad serves as the Chief Operating Officer, managing day-to-day operations and implementing strategic initiatives to drive efficiency and growth. With 18 years of experience in Mechanical, oversees internal processes, technology, and team development to ensure alignment with company goals.



36 Years in the Service of the UAE Construction Industry

An ISO Certified Company

ISO 9001:2015 and ISO 45001:2018



COMPANY HISTORY



OUR LICENSE & VAT CERTIFICATE


113314


الحكومة الاتحادية
Government of Sharjah
Economic Development Department

رخصة تجارية
Trading License



License Details تفاصيل الرخصة

Issue Date	12-05-1990	تاريخ الإصدار	License No.	113314	رقم الرخصة
Expiry Date	09-05-2027	تاريخ الإنتهاء	Registration No.	78138	رقم السجل
Trade Name					AL RANA EQUIP & MACHINERY TR. LLC SP
Legal status					Individual Company L.L.C شركة ذات مسؤولية محدودة - الشخص الواحد (ذ م م)

License Members أطراف الرخصة

الحصص	الصفة	رقم الهوية / الجواز	الجنسية	اسم المستثمر	رقم المستثمر
Shares	Type	ID \ Passport No	Nationality	Investor Name	Investor No
100.0 %	المالك	784195463681478	كندا	بسام نوفل	92943
	Owner		Canada	BASSAM NOWFAL	

Notes الملاحظات

--تغيير جنسية المستثمر-تغيير جنسية المستثمر


1 / 3



28-04-2026 : Printing Date / تاريخ الطباعة
39803 : User Name / رقم المستخدم

هذه الوثيقة رسمية ولا تحتاج لثبوت أو توقيع -
www.sedd.ae لتأكيد من صحة البيانات يرجى زيارة موقع الدائرة
- يمنع توزيع الإعلانات في الأماكن المأهولة والأحياء السكنية.
- يلزم استخراج تصريح عند إجراء أي عروض أو ترويجية.

www.sedd.ae 80080000


الهيئة الاتحادية للضرائب
FEDERAL TAX AUTHORITY


United Arab Emirates

شهادة تسجيل لضريبة القيمة المضافة في الامارات العربية المتحدة
Certificate of Tax Group Registration in the United Arab Emirates

The Federal Tax Authority certifies the formation of the below Tax Group in the UAE تشهد الهيئة الاتحادية للضرائب أن الجهة التالية مسجلة لضريبة القيمة المضافة في الامارات العربية المتحدة

Tax Registration Number	100230268300003	رقم التسجيل الضريبي
Effective Registration Date	01/01/2018	تاريخ التسجيل الفعلي
Full Arabic legal name	الربنا لتجارة المعدات والآليات ذ م م شركة الشخص الواحد	الاسم القانوني الكامل باللغة العربية
Full English legal name	AL RANA EQUIP & MACHINERY TR. LLC SOLE PROPRIETORSHIP	الاسم القانوني الكامل باللغة الانجليزية
Registered address	Flat No-2803, Al Majaz, Sharjah, Sharjah, United Arab Emirates, 0000, +971506312891	العنوان المسجل
Other members of the Group		
No.	Name (English)	Name (Arabic)
1	Al Rana Equipment & Machines Trdg. FZE	الربنا لتجارة الآلات والمعدات م م ح
First VAT return period	01 Jan 2018 - 31 Mar 2018 and quarterly thereafter	فترة أول إقرار لضريبة القيمة المضافة
First VAT return due date	29 Apr 2018	تاريخ استحقاق أول إقرار لضريبة القيمة المضافة
Start and end dates of Tax periods:	1 Apr to 30 Jun, 1 Jul to 30 Sep, 1 Oct to 31 Dec, 1 Jan to 31 Mar	

يرجى التأكد من صحة تفاصيل الشهادة، يجب إبلاغ الهيئة الاتحادية للضرائب في حال تغيير الاسس التي حصلت فيها على رقم التسجيل الضريبي الخاص بك.

Please ensure that the details on this certificate are correct. You must inform the Federal Tax Authority of any change on the basis of which you obtained your Tax Registration Number as a Tax Group.



Issuing Date: 30/08/2022 **تاريخ الإصدار**

ISO CERTIFICATIONS

Certificate CH21/0189.00
The management system of
**Al Rana Equip. & Machinery Tr. LLC
Sole Proprietorship**

Flat Nos. 2701 & 2702, Business Power, Buhairah, Sharjah, United Arab Emirates,
has been assessed and certified as meeting the requirements of
ISO 45001:2018




For the following activities
Import/ Export/ Trading of new and used heavy equipment, sales, rentals, services, spare parts,
maintenance for heavy equipment specialized in tower cranes, Earth moving machines, passenger hoists,
platforms and form works building system.

This certificate is valid from 07 April 2025 until 20 December 2027 and remains valid subject to satisfactory surveillance audits.

Issue 3. Certified since 08 February 2021
Certified activities performed by additional sites are listed on subsequent pages.
This organization was previously certified to OHSAS 18001 since 21 December 2015
Last certificate expiry date 20 December 2024
Recertification audit date 24 December 2024

D. Willemijn *Jan Meemken*
Authorised by Daniel Willemijn Accreditation Manager Authorised by Jan Meemken Head of Business

SGS Société Générale de Surveillance SA
Technoparkstrasse 1, 8005, Zurich, Switzerland
t +41 (0)44 445-16-80 - www.sgs.com



Page 1 / 2

Certificate CH21/0189.00, continued
**Al Rana Equip. & Machinery Tr. LLC
Sole Proprietorship**

ISO 45001:2018
Issue 3

Sites
Al Rana Equip. & Machinery Tr. LLC Sole Proprietorship
Flat Nos. 2701 & 2702, Business Power, Buhairah, Sharjah, United Arab Emirates.
Import/ Export/ Trading of new and used heavy equipment, sales, rentals, services, spare parts, maintenance for heavy
equipment specialized in tower cranes, Earth moving machines, passenger hoists, platforms and form works building
system.

Al Rana Equip. & Machines Trdg. FZE
P.O Box: 42462, Block 2F-03, Hamriyah Free Zone, Sharjah, United Arab Emirates.
Import/ Export/ Trading of new and used heavy equipment, sales, rentals, services, spare parts, maintenance for heavy
equipment specialized in tower cranes, Earth moving machines, passenger hoists, platforms and form works building
system.



Page 2 / 2

Certificate CH18/1275.00
The management system of
**Al Rana Equip. & Machinery Tr. LLC
Sole Proprietorship**

Flat Nos. 2701 & 2702, Business Power, Buhairah, Sharjah, United Arab Emirates.
has been assessed and certified as meeting the requirements of
ISO 9001:2015

For the following activities
Import/ Export/ Trading of new and used heavy equipment, sales, rentals, services, spare parts,
maintenance for heavy equipment specialized in tower cranes, Earth moving machines, passenger hoists,
platforms and form works building system.

This certificate is valid from 07 April 2025 until 20 December 2027 and remains valid subject to satisfactory surveillance audits.

Issue 3. Certified since 21 December 2015
Certified activities performed by additional sites are listed on subsequent pages.
Last certificate expiry date 20 December 2024
Recertification audit date 24 December 2024

D. Willemijn *Jan Meemken*
Authorised by Daniel Willemijn Accreditation Manager Authorised by Jan Meemken Head of Business

SGS Société Générale de Surveillance SA
Technoparkstrasse 1, 8005, Zurich, Switzerland
t +41 (0)44 445-16-80 - www.sgs.com



Page 1 / 2

Certificate CH18/1275.00, continued
**Al Rana Equip. & Machinery Tr. LLC
Sole Proprietorship**

ISO 9001:2015
Issue 3

Sites
Al Rana Equip. & Machinery Tr. LLC Sole Proprietorship
Flat Nos. 2701 & 2702, Business Power, Buhairah, Sharjah, United Arab Emirates.
Import/ Export/ Trading of new and used heavy equipment, sales, rentals, services, spare parts, maintenance for heavy
equipment specialized in tower cranes, Earth moving machines, passenger hoists, platforms and form works building
system.

Al Rana Equip. & Machines Trdg. FZE
P.O Box: 42462, Block 2F-03, Hamriyah Free Zone, Sharjah, United Arab Emirates.
Import/ Export/ Trading of new and used heavy equipment, sales, rentals, services, spare parts, maintenance for heavy
equipment specialized in tower cranes, Earth moving machines, passenger hoists, platforms and form works building
system.




Page 2 / 2

OUR ACHIEVEMENTS



OUR SERVICES

- CRANE REPAIR & PREVENTIVE MAINTENANCE
 - ANNUAL MAINTENANCE CONTRACTS (AMC)
 - MOBILIZATION & DEMOBILIZATION
 - LOADING, OFFLOADING & TRANSPORTATION
 - ERECTION & DISMANTLING SERVICES
 - MAINTENANCE & OPERATION SERVICES
 - REVAMPING, OVERHULING & MODIFICATION
 - SHUTDOWN & STRATEGIC OPERATIONS
 - FABRICATION OF TIE-IN SUPPORT, SADDLE BEAM & SLEEVES FOR TOWER CRANE
 - SADDLE BEAMS
 - SLEEVES
-
- 

CRANE REPAIR & PREVENTIVE MAINTENANCE

To meet the growing demands of our clients, we provide expert crane repair and preventive maintenance services for high-tech EOT and HOT cranes. Our goal is to ensure smooth operations and eliminate unexpected breakdowns through proactive care and technical expertise.

Our Scope Includes:

- Complete crane inspection and diagnostics
- Preventive maintenance for all crane components
- Breakdown repair and troubleshooting
- Mechanical and electrical servicing
- Upkeep solutions for full crane assembly

Key Benefits:

- Minimized unexpected downtime
- Improved equipment reliability
- Extended crane lifespan





AMC - ANNUAL MAINTENANCE CONTRACTS

We offer comprehensive Annual Maintenance Contracts focused on preventing failures before they occur. Our AMC services ensure your material handling equipment operates efficiently with regular monitoring and expert support.

Our Scope Includes:

- Scheduled preventive maintenance
- Routine inspection and servicing
- Performance monitoring
- On-call technical support
- Detailed maintenance reporting

Key Benefits:

- Reduced breakdown risks
- Predictable maintenance costs
- Continuous operational efficiency





24/7 BREAKDOWN & EMERGENCY SERVICES

Our dedicated team is available round the clock to handle urgent breakdowns and critical situations. With ready manpower and spare parts, we ensure immediate response and quick restoration of operations.

Our Scope Includes:

- Emergency repair services
- Rapid response technical team
- On-site troubleshooting
- Spare parts replacement
- Immediate operational recovery

Key Benefits:

- 24/7 availability
- Fast response time
- Reduced production losses





MOBILIZATION & DEMOBILIZATION

We ensure seamless mobilization and demobilization of equipment, workforce, and resources for project sites. Our structured approach guarantees smooth execution from start to completion.

Our Scope Includes:

- Equipment and manpower mobilization
- Site setup and preparation
- Safe dismantling and removal
- Logistics coordination

Key Benefits:

- Efficient project execution
- Organized site management
- Time-saving operations





LOADING, OFFLOADING & TRANSPORTATION

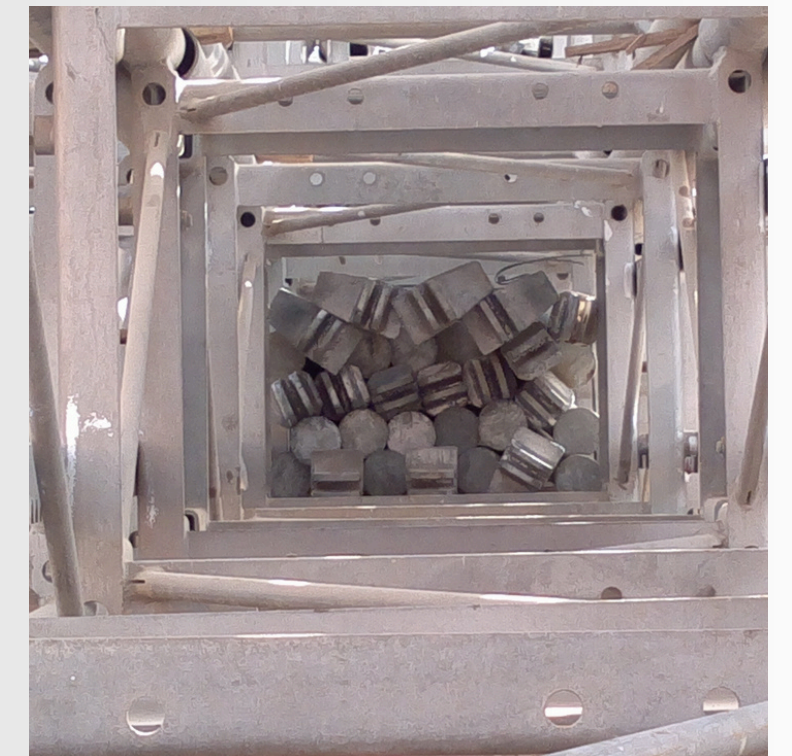
We provide safe and reliable handling of heavy equipment through professional loading, offloading, and transportation services using advanced tools and skilled operators.

Our Scope Includes:

- Heavy equipment handling
- Safe loading and unloading
- Transportation planning and execution
- Route and safety management

Key Benefits:

- Damage-free handling
- Timely delivery
- Secure logistics operations





ERECTION & DISMANTLING

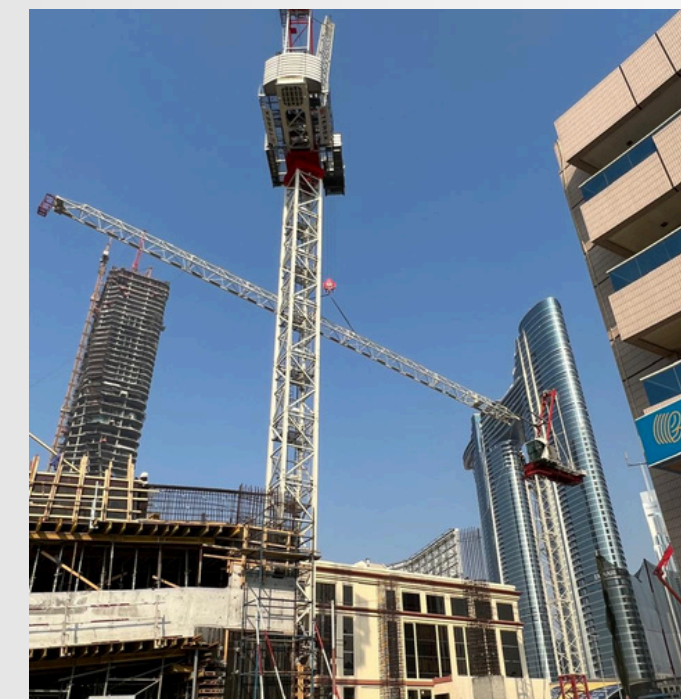
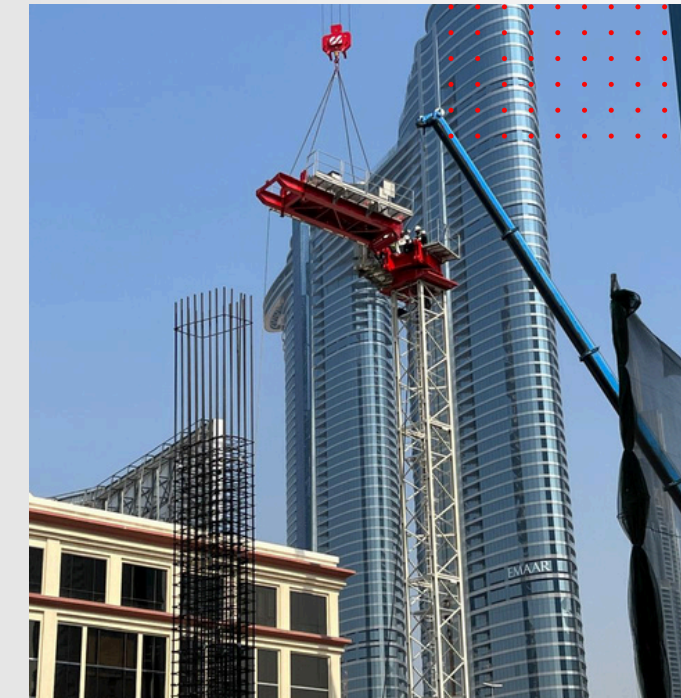
Our experienced team offers precise erection and dismantling services for cranes and heavy equipment, ensuring safety and compliance with industry standards.

Our Scope Includes:

- Crane installation and setup
- Alignment and commissioning
- Safe dismantling procedures
- Technical supervision

Key Benefits:

- Safe execution
- Professional expertise
- Compliance with standards





MAINTENANCE & OPERATION SERVICES

We provide end-to-end maintenance and operation services to ensure optimal performance of your equipment with minimal downtime.

Our Scope Includes:

- Routine servicing and inspection
- Equipment operation by skilled staff
- Preventive and corrective maintenance
- Performance optimization

Key Benefits:

- Increased efficiency
- Reduced operational cost
- Longer equipment life





REVAMPING, OVERHAULING & MODIFICATION

We specialize in upgrading and modernizing existing equipment through revamping, overhauling, and strategic modifications to enhance performance and reliability.

Our Scope Includes:

- Equipment overhaul and refurbishment
- System upgrades
- Design modifications
- Performance enhancement solutions

Key Benefits:

- Improved productivity
- Cost-effective upgrades
- Extended equipment usability





SHUTDOWN & STRATEGIC OPERATIONS

We provide expert support for shutdown operations, ensuring minimal disruption and efficient execution of maintenance and upgrades during critical timeframes.

Our Scope Includes:

- Shutdown planning and execution
- Manpower deployment
- Spare parts management
- Quick turnaround maintenance

Key Benefits:

- Reduced downtime
- Efficient execution
- Ready resources availability





FABRICATION OF TIE-IN SUPPORT, SADDLE BEAM & SLEEVES FOR TOWER CRANE

We provide expert support for shutdown operations, ensuring minimal disruption and efficient execution of maintenance and upgrades during critical timeframes.

Our Scope Includes:

- Design and fabrication of custom tie-in supports
- High-strength steel fabrication and welding
- Dimensional accuracy and load testing
- Site-specific configuration and installation support

Key Benefits

- Enhanced crane stability
- Reduced structural vibration
- Highload-bearing performance
- Improved operational safety





SADDLE BEAMS

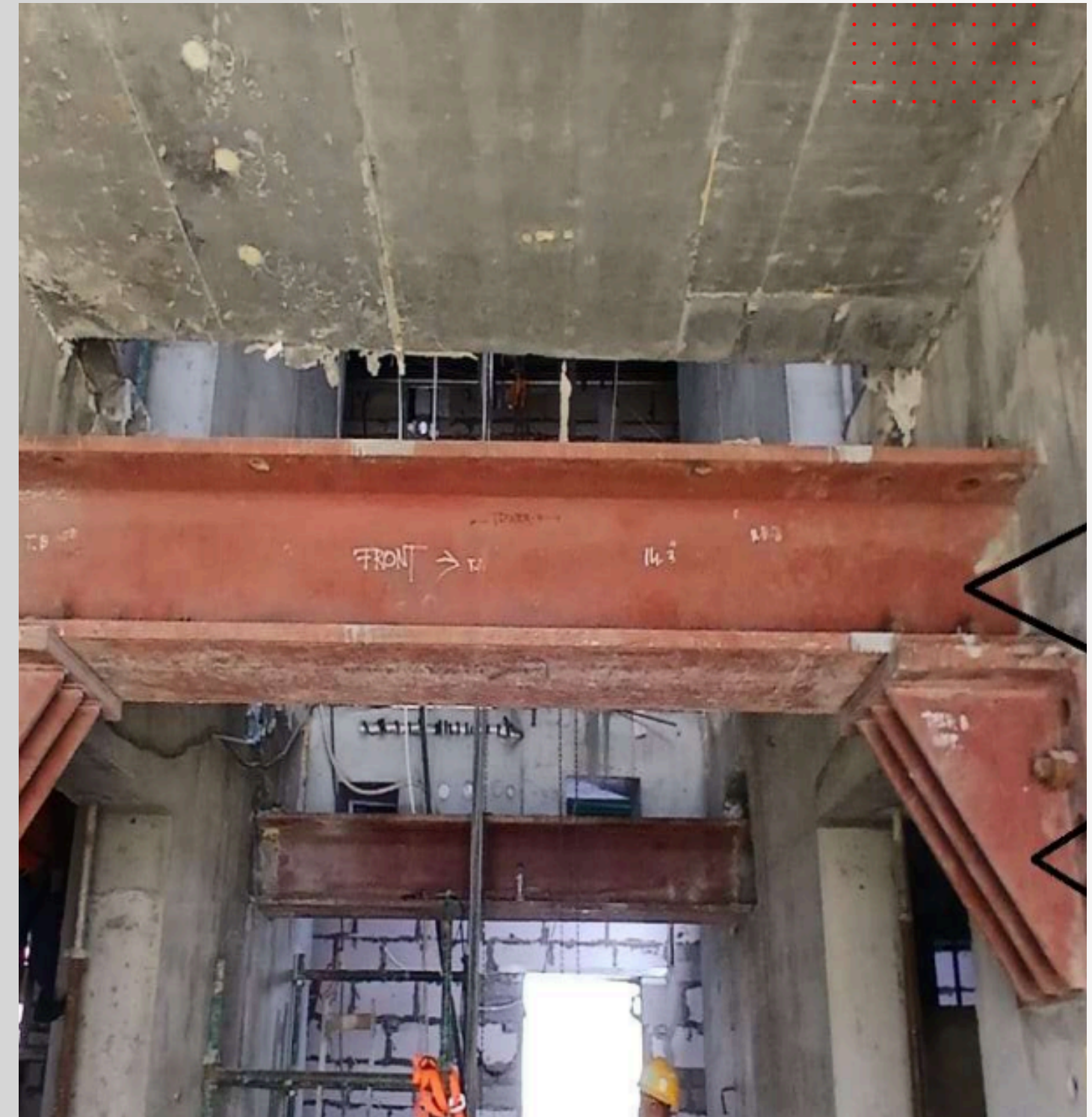
We manufacture durable and high-performance saddle beams engineered for optimal load distribution and structural support in tower crane applications.

Our Scope Includes:

- Fabrication of heavy-duty saddle beams
- Customize dimension and configuration base on project specification
- Precision machining and assembly
- Integration with existing structural systems

Key Benefits

- Balanced load distribution
- Increased structural reliability
- Enhanced operational efficiency
- Long-term durability in demanding conditions





SLEEVES

We fabricate high-precision sleeves designed for the safe anchoring and accurate positioning of tower cranes within concrete structures.

Our Scope Includes:

- Manufacturing of crane anchoring sleeves
- Precision alignment and positioning solutions
- Corrosion-resistant fabrication
- Quality inspection and compliance checks

Key Benefits

- Secure crane anchorage
- Faster installation and dismantling
- Improved structural integrity
- Compliance with safety standards



OUR PRODUCTS



Tower Cranes



Used Tower Cranes



Material & Passenger Hoists



Concrete Placing Booms



Earth Moving Machines



Spare Parts



TOWER CRANES



Self Erecting Tower Cranes



Flat Top Power Cranes



Hammer Head Tower Cranes



Luffing Jib Tower Cranes



SELF ERECTING TOWER CRANES



A reliable quality and safety are the reasons for the success of Comedil "CBR" self-erecting cranes all over the world, and for the widespread favorable answer of the market.

Features

- A self-erecting range with 16 to 40m capacity and jib lengths up to 40m is the result of constant technological research.
- These cranes are suitable for both road and containerized transport.
- The erection is quick, carried out with simple and automated systems.
- First-rate quality components, variable frequency control drive assemblies.
- Full galvanization of the structure.

FLAT TOP TOWER CRANES



Flat top tower cranes are designed for fast and easy erection.

It is perfect condition for compression and deflection

Features

- Reliable & Generous Performance.
- Equipped with Safety Devices
- State of the Art Control Technology



HAMMERHEAD TOWER CRANES



They're well suited for heavy lifting and placement duties on the most challenging jobsites. And they can also help you save time on other jobsite duties by easily moving materials from one area to another.

From the efficient setup that gets you working quickly to the variety of jobsite duties it can handle, you'll get great value from your Terex® tower crane every day

Features

- Quality manufacturing designed for reliable performance hour after hour.
- Easy maintenance access and built-in safety features to keep downtime to a minimum.
- Ergonomic cabs provide the comfort required for long hours on the job.





LUFFING JIB TOWER CRANES



Luffing jib tower cranes are specially designed for urban use. They feature outstanding reach requiring little room for slewing motions—a special advantage if many cranes are working at the same time on high-rise buildings and power plant sites.

Features

- Quality manufacturing designed for reliable performance hour after hour.
- Easy maintenance access and built-in safety features to keep downtime to a minimum.
- Ergonomic cabs provide the comfort required for long hours on the job



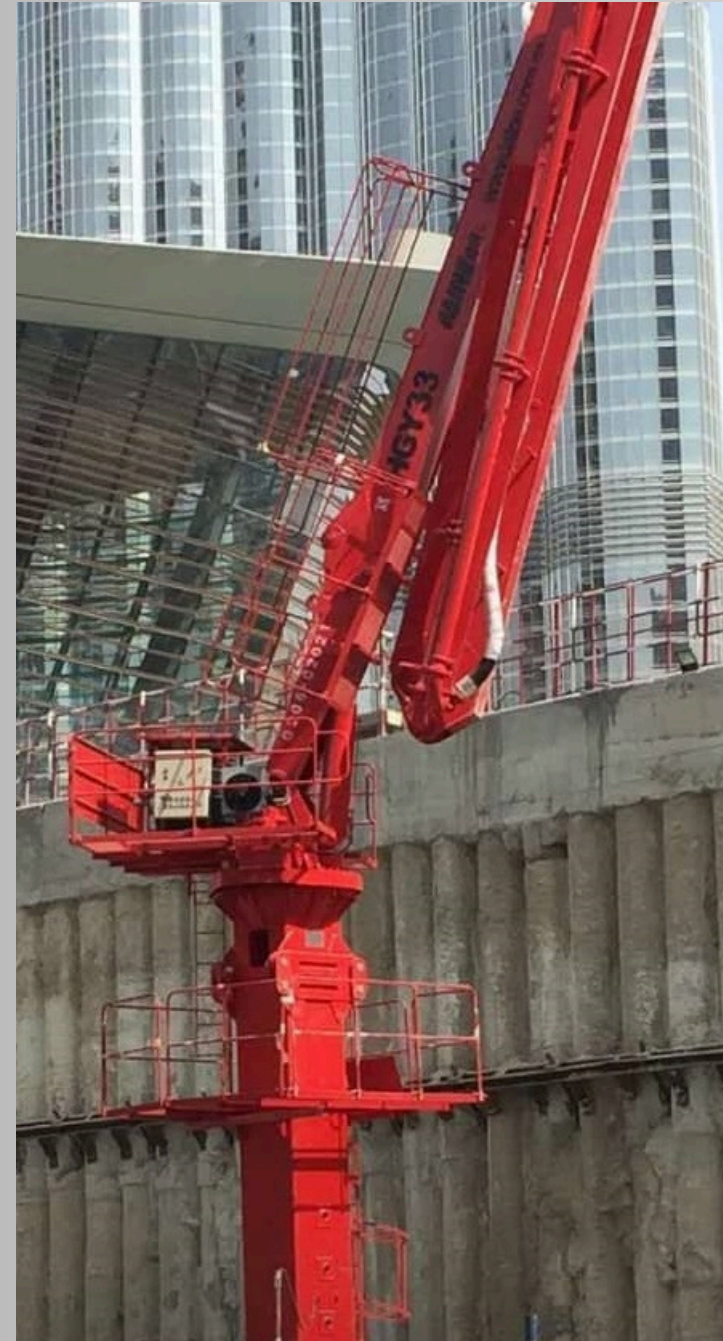
MATERIAL & PASSENGER HOISTS



Product	Lifting Speed	Height	Lifting Capacity	Download
SC120-TD	36 m/min	Adjustable	1200 Kgs	
SC 200/200 TD	36 m/min	Adjustable	2000 Kgs	
SC 200/200 GZ	63 m/min	Adjustable	2000 Kgs	
SC 200/200 G	96 m/min	Adjustable	2000 Kgs	
SC 200/200 GS SEW	96 m/min	Adjustable	2000 Kgs	
SC 270/270 GS SEW	96 m/min	Adjustable	2700 Kgs	



CONCRETE PLACING BOOMS



Product	No. Of Sec.	Chasis No.	Serial No.	Year	Download
Concrete Placing Boom 28m	3			New	
Concrete Placing Boom 32m	3			New	
Concrete Placing Boom 32m	4			New	
Stationery Pump with VOLVO Engine				New	





EARTH MOVING MACHINES



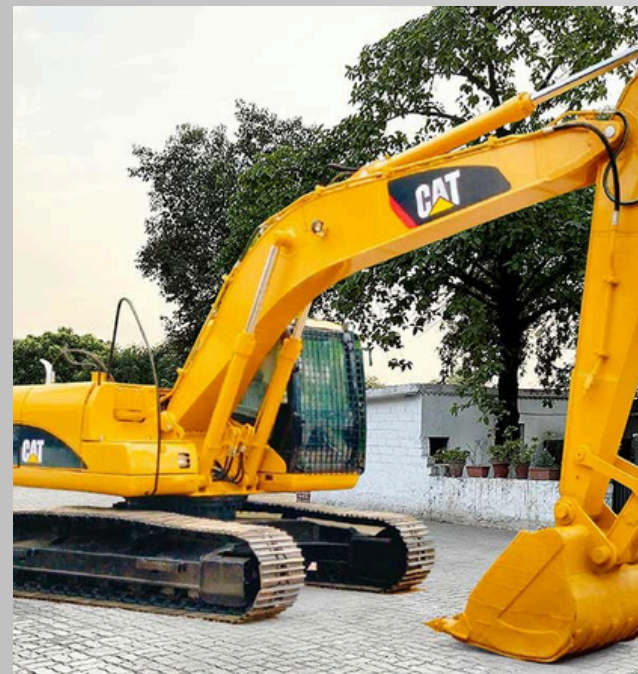
DOZER (CRAWLER TRACTOR)



ARTICULATED DUMPTRUCK



MOTOR GRADER



EXCAVATOR(HYDRAULIC)



WHEEL LOADER





OUR BRANDS

CATERPILLAR[®]



TEREX | COMEDIL



ZENIT

POTAIN

KOMATSU

ZTM



LIEBHERR

ZOOMLION

JARLWAY

◀ MAJOR UAE PROJECTS INVOLVING AREMATES

Dubai Mall Project – Supplied lifting equipment for major construction phases.

Paramount Hotel By Damac (Dubai) – Provided heavy-duty Terex Comedil tower cranes to navigate a highly confined 10,000m² footprint.

The Dubai Frame - Assisted in the specialized lifting and structural phases.

Al Ain Stadium & Mixed-Use Development (Phase 1 & 2) – Deployed Tower Cranes

Dubai Opera House Project – Provided critical machinery for complex structural erection.

Burj Vista Towers – Supported high-rise vertical logistics.

Sharjah Developments – Heavily/ locally in projects like the **Asas Towers, Sahara Mall Expansion, and Al Majaz Tower 2**



DUBAI PROJECTS INVOLVING AREMATES

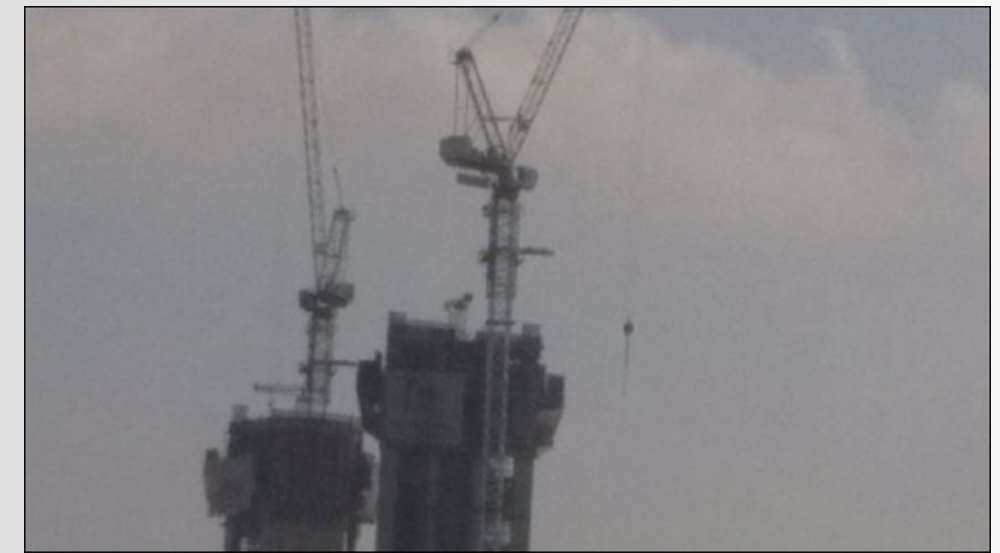
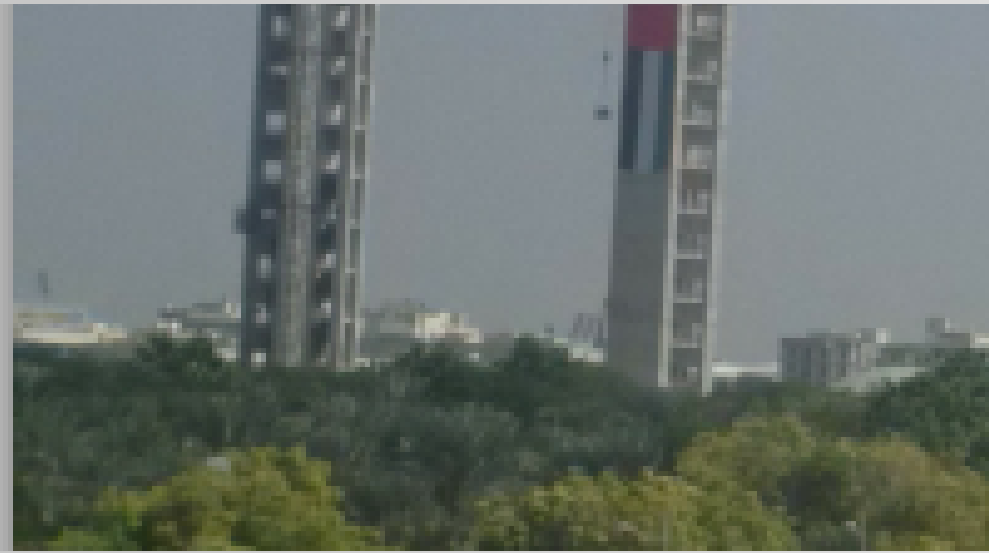
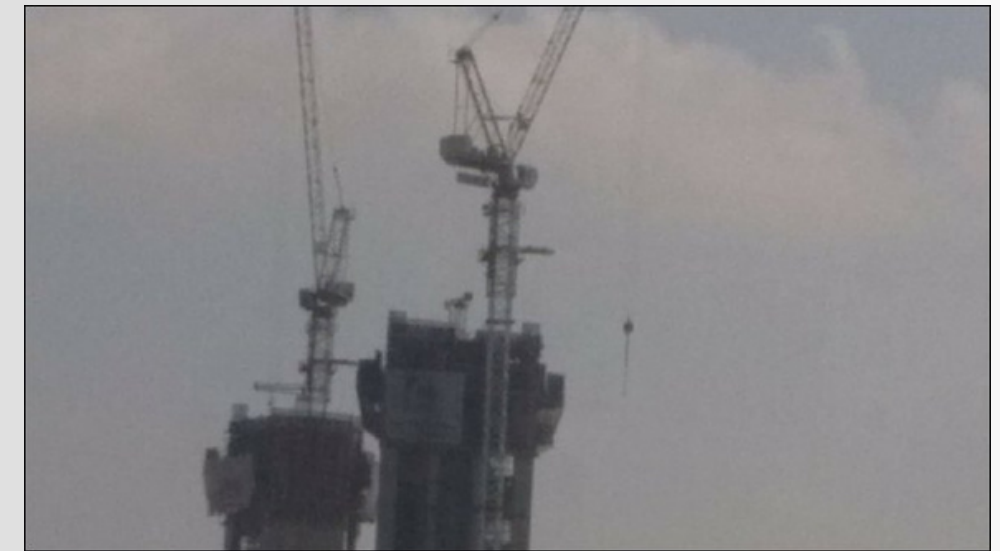
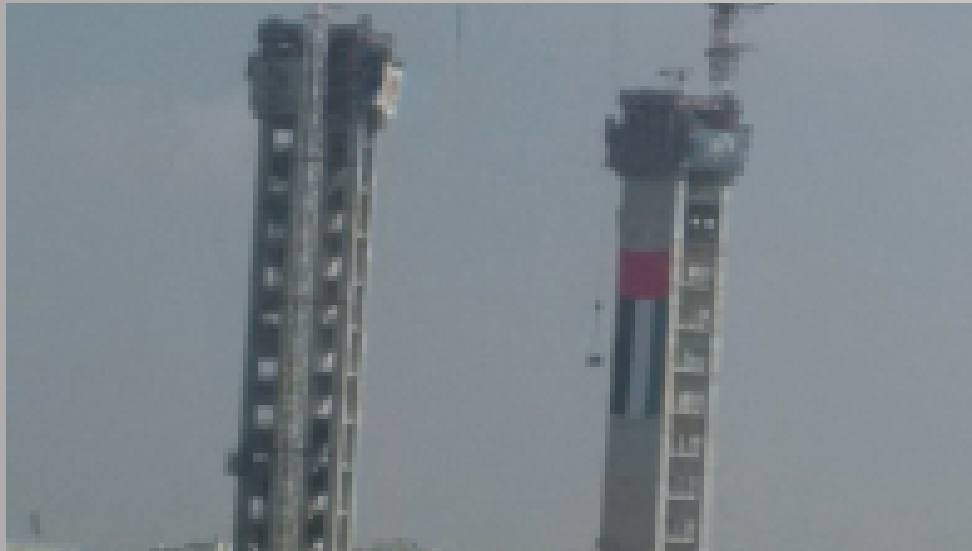
BURJ VISTA





DUBAI PROJECTS INVOLVING AREMATES

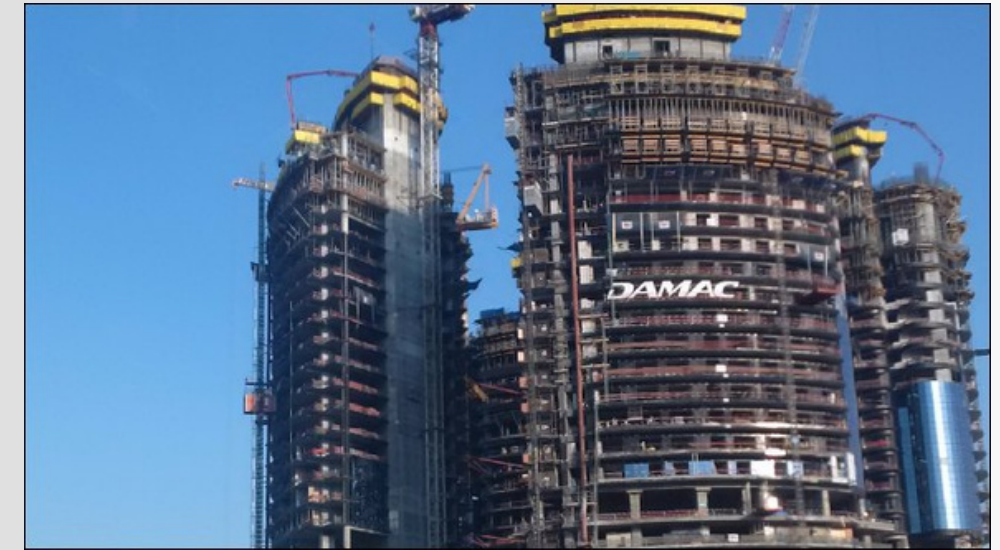
THE DUBAI FRAME





DUBAI PROJECTS INVOLVING AREMATES

DAMAC TOWERS BY PARAMOUNT





DUBAI PROJECTS INVOLVING AREMATES

OPERA HOUSE





DUBAI PROJECTS INVOLVING AREMATES

THE DUBAI MALL





DUBAI PROJECTS INVOLVING AREMATES

CANAL POINT HOSPITAL (PHASE 1 & PHASE 2)



**J-318- THE SQUARE –PLOT 134-834,
AL MAMZAR**



EMIRATES FLIGHT CATERING FACILITY

(DEWA MUSHRIF WATER RESERVOIR)





DUBAI PROJECTS INVOLVING AREMATES

DAMAS TOWER 1 & 2



MAMZAR RESIDENTIAL TOWER



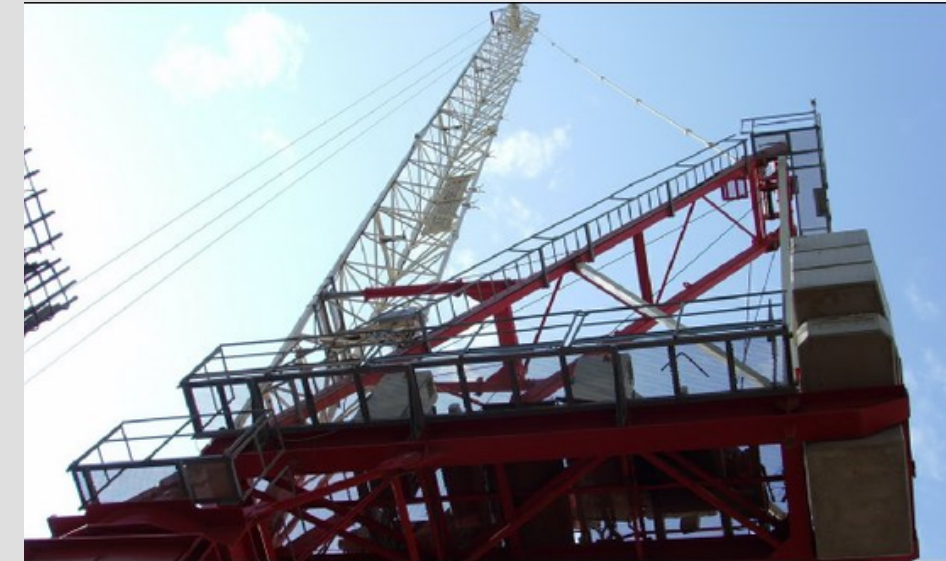
J. RAY MC DERMOTT YARD





DUBAI PROJECTS INVOLVING AREMATES

AL YAQOUB TOWER



MARSA TOWER AT PLOT 392-264



DUBAI BANK





DUBAI PROJECTS INVOLVING AREMATES

**B+G+3P+18 2 BUILDINGS COMMERCIAL/RESIDENTIAL PROJECT
PLOT 134-1072 AL MAMZAR**



**COMMERCIAL/RESIDENTIAL
AL MAMZAR, PLOT 134-1072**



AVIATION CLUB HOTEL



**B+G+3P+18 2 BUILDINGS
COMMERCIAL/RESIDENTIAL, AL MAMZAR**

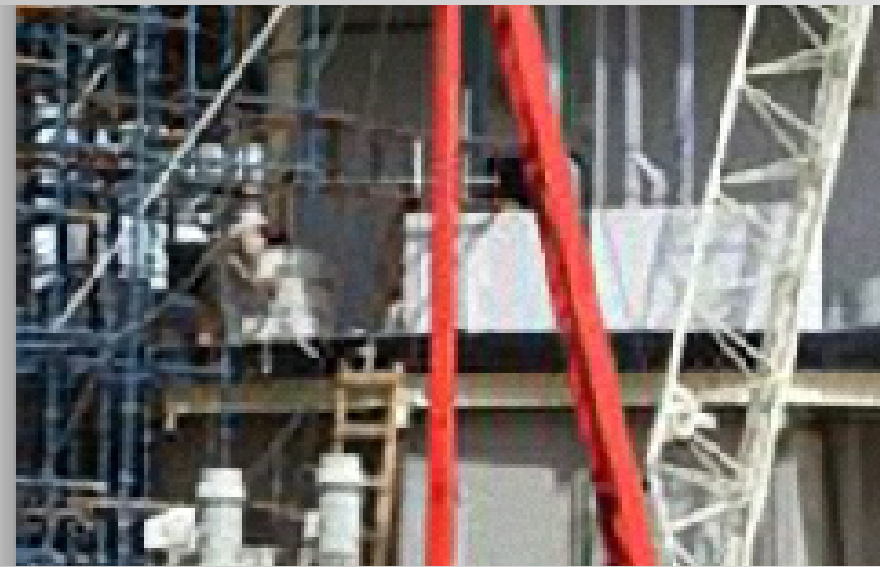




DUBAI PROJECTS INVOLVING AREMATES

DERRICK CRANES RENTAL USED FOR DISMANTLING INTER-FLOOR TYPE OF TOWER CRANES (HIGH RISE BUILDINGS)

DAMAS TOWER 1 & 2 PROJECT, SHEIKH ZAYED ROAD



WOW HOTEL



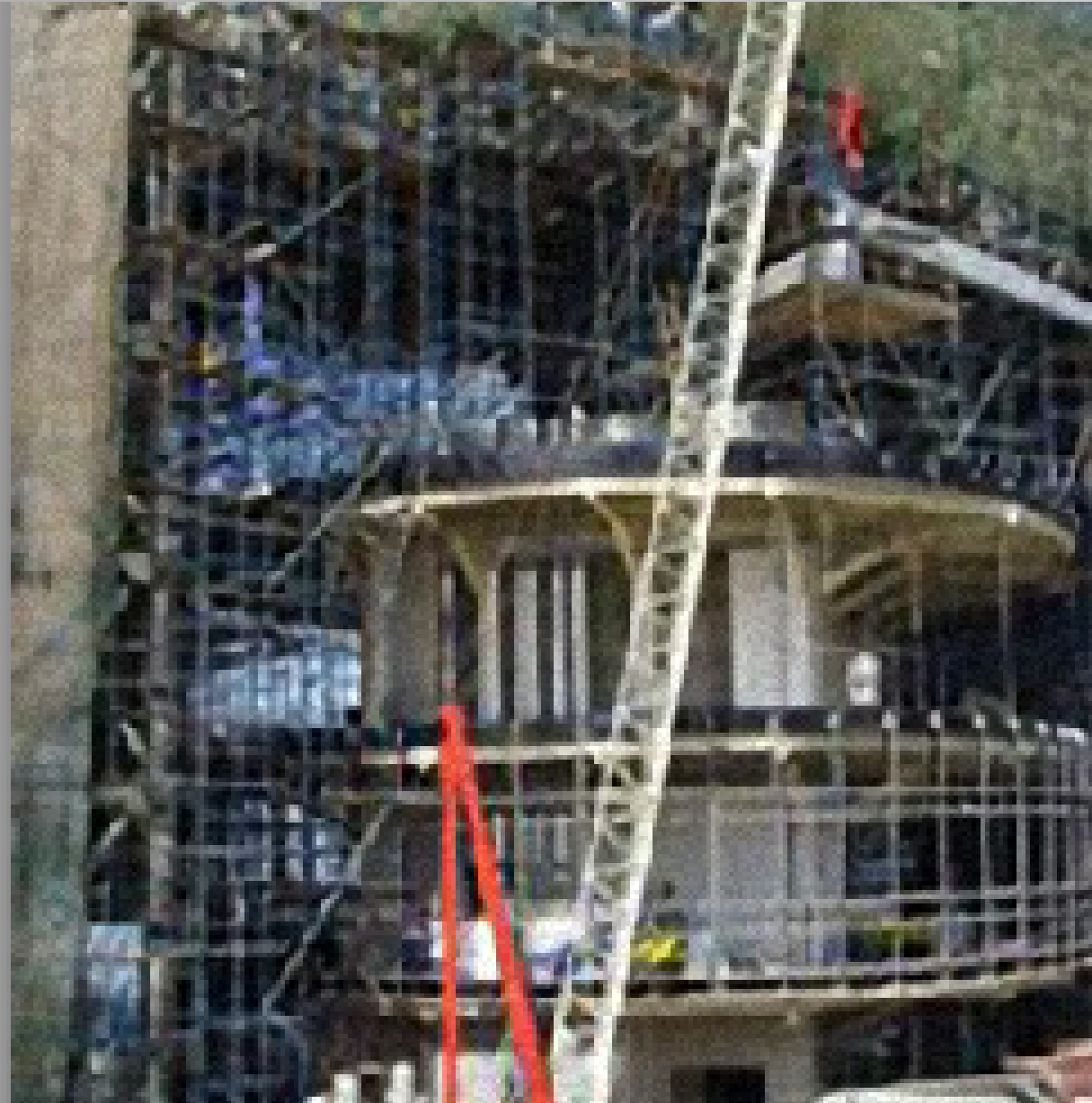
AL ROSTAMANI PROJECT, DUBAI - UAE





DUBAI PROJECTS INVOLVING AREMATES

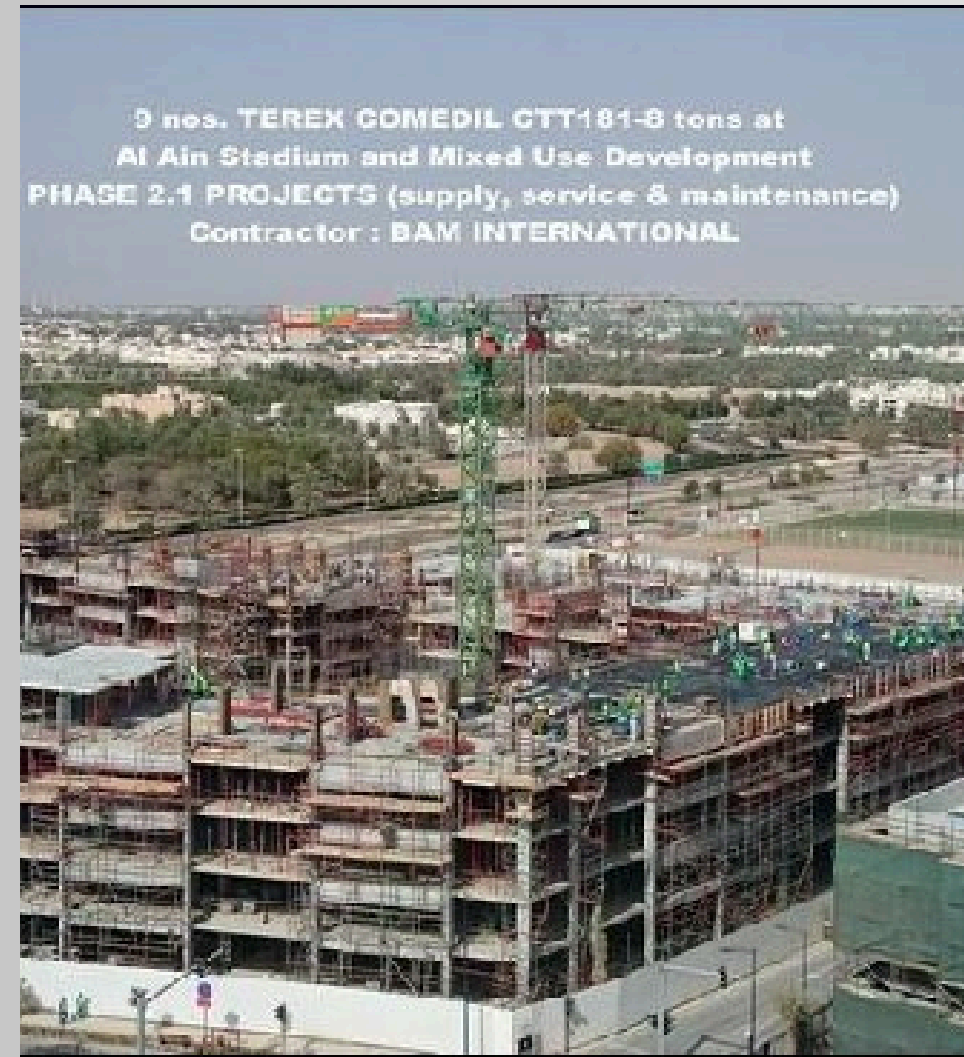
DERRICK CRANES RENTAL USED FOR DISMANTLING INTER-FLOOR TYPE OF TOWER CRANES (HIGH RISE BUILDINGS)





NORTHERN EMIRATES PROJECTS INVOLVING AREMATES

AL AIN STADIUM & MIXED USE DEVELOPMENT PHASE 2.1 PROJECT, AL AIN – UAE





NORTHERN EMIRATES PROJECTS INVOLVING AREMATES

**ASAS TOWER PROJECT PLOT 1032
AL KHAN , SHARJAH**



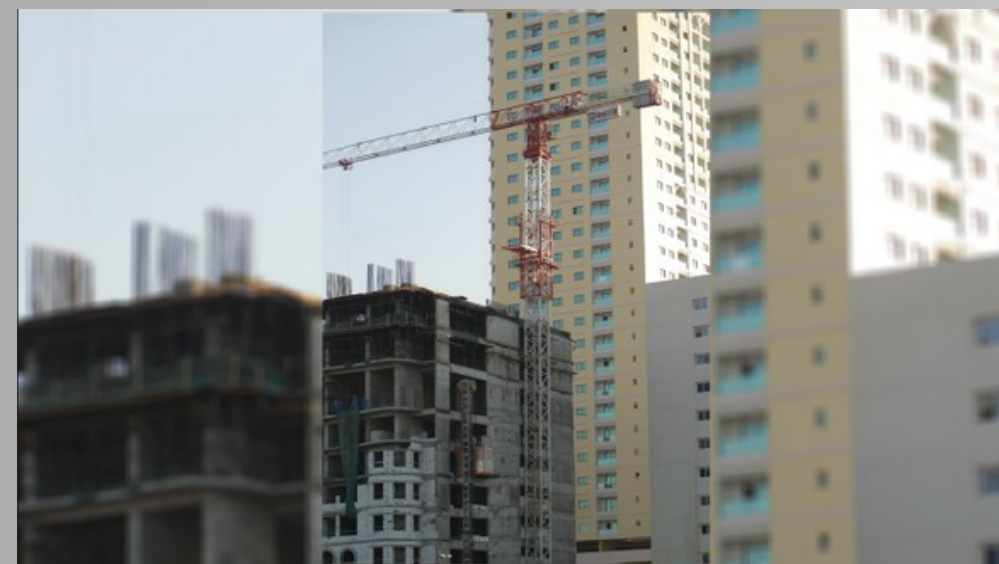
**AL MAJAZ TOWER 2 PROJECT,
SHARJAH**



**RAS LAFFAN PRECAST PROJECT,
AJMAN HARBOUR , AJMAN –**



**AL MALAK TOWER AT NAHDA
, SHARJAH**



**SHARJAH PRIVATE SCHOOL
BUILDING**



AL KHAN PROJECT, SHARJAH





NORTHERN EMIRATES PROJECTS INVOLVING AREMATES

AL NAKLAH TOWER 3 PROJECT – AL QASBAH SHARJAH –



PLOT 567 AL NAHDA PROJECT, SHARJAH



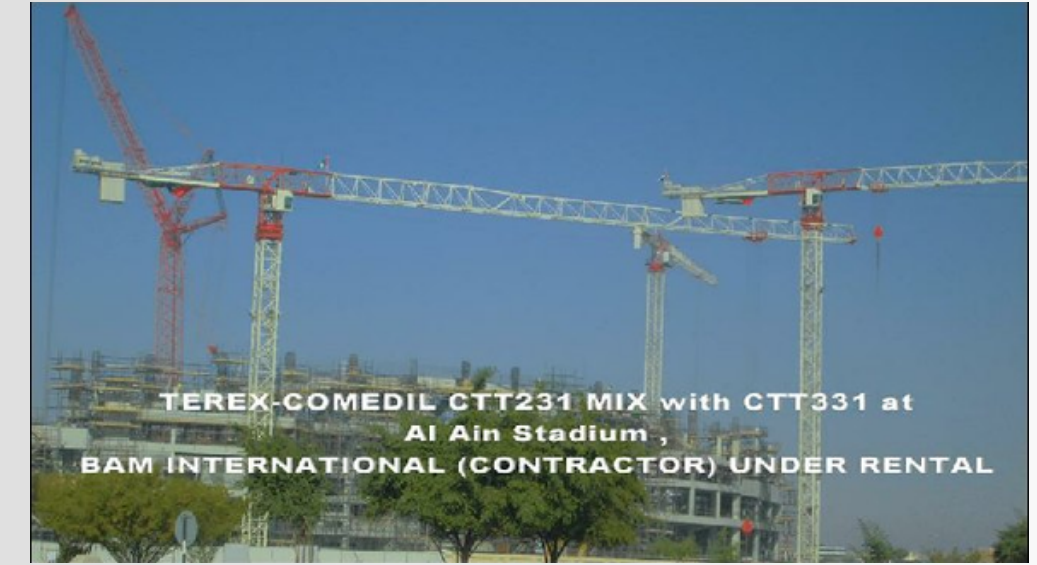
AL NUAMI TOWERS PROJECT & SOME OTHER PROJECTS, AJMAN



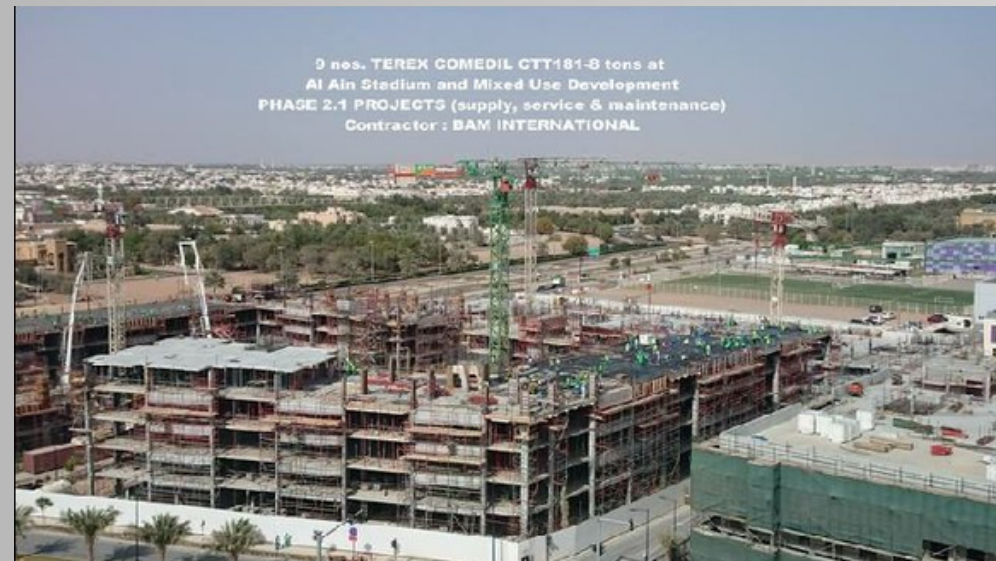


ABU DHABI PROJECTS INVOLVING AREMATES

AL AIN STADIUM PHASE 1 PROJECT, AL AIN



AL AIN STADIUM & MIXED USE DEVELOPMENT PHASE 2.1





ABU DHABI PROJECTS INVOLVING AREMATES

AL BUSTAN COMPLEX PROJECT SITE 279 SECTOR E35



CAPITAL GATE (ABU DHABI NATIONAL EXHIBITION CENTRE) PHASE 3, PROJECT SITE 275





ABU DHABI PROJECTS INVOLVING AREMATES

**H.H SHK. SULTAN BIN
TAHNOON AL NAHYAN BLDG**



RAHA BEACH, AL ZEINA SITE



PREMIER INN ABU DHABI INTERNATIONAL AIRPORT





ABU DHABI PROJECTS INVOLVING AREMATES

HODARIYAT BRIDGE PROJECT, ABU DHABI – UAE





INTERNATIONAL PROJECTS INVOLVING AREMATES

**NHAT TAN BRIDGE PROJECT W/ SPANS 8.5KM INCLDNG 3.9KM
BRIDGE SECTION OVER THE RED RIVER, HANOI-VIETNAM**



(DOHA QATAR) MIXED PROJECTS





INTERNATIONAL PROJECTS INVOLVING AREMATES

KING ABDUL ABDULLAH FINANCIAL DISTRICT PROJECT , RIYADH – KINGDOM OF SAUDI ARABIA



BOTANIC GARDEN - OMAN





INTERNATIONAL PROJECTS INVOLVING AREMATES

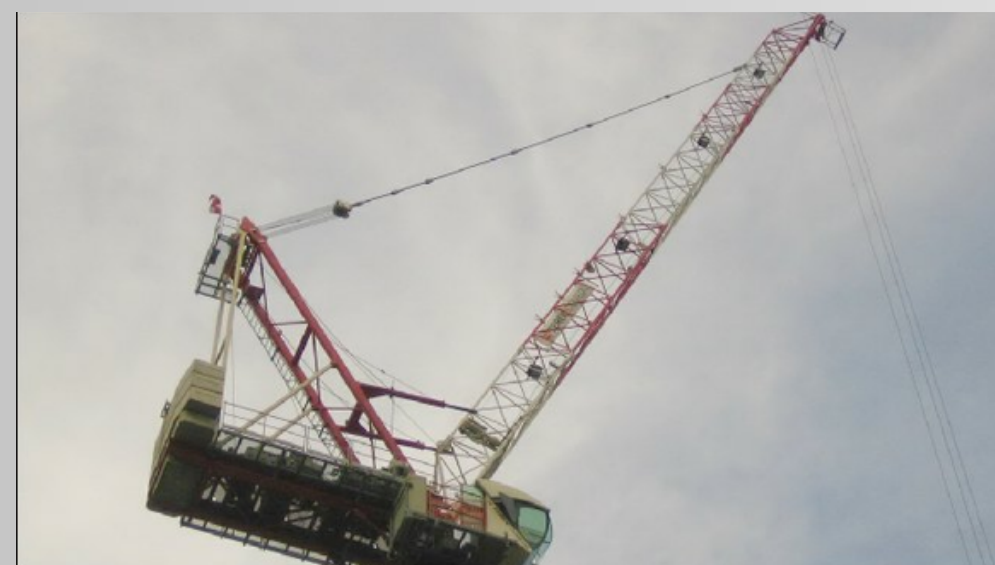
HDB TAMPINES N5C9 - SINGAPORE PROJECT



**ST THOMAS WALK (TC1) JOB SITE ,
SINGAPORE PROJECT**



ST. MICHAEL/ MARTHOMA ROAD - SINGAPORE PROJECT





INTERNATIONAL PROJECTS INVOLVING AREMATES

SELECT PLANT MIXED PROJECTS - LONDON- UK



MARASSI MALL PROJECTS BAHRAIN





SOME OF OUR MAJOR LOCAL CLIENTS

- AMANAH BUILDING CONTRACTING
- AL ALI CONSTRUCTION & DEVELOPMENT
- AL BUHAIRA CONTRACTING LLC
- AL SHIRAM CONTRACTING
- ALEC ENGINEERING & CONTRACTING LLC
- AL NABOODAH NATIONAL PAINT
- ARABIAN CONSTRUCTION CO. (ACC)
- AL ROSTAMANI PEGEL
- AL SAHEL CONTRACTING COMPANY
- AL TURATH AL ASEEL CONTRACTING LLC
- ASIA PRIME GENERAL CONTRACTING CO. LLC
- BK GULF (LLC)
- CONSTRUCTION TECH
- CHINA STATE CONSTRUCTION ENGINEERING CORPORATION
- DUBAI DAWN DISTINGUISHED CONSTRUCTION
- FIBREX LLC
- CONSOLIDATED CONTRACTORS INTERNATIONAL COMPANY (CAIC)
- FUJSENG CONSTRUCTION LLC
- H & N INNOVATIVE SYSTEM CONTRACTING LLC
- ILLIYA FOR BUILDING CONTRACTING CO. LLC
- ITALTECH CONTRACTING LLC
- GARDENIA BUILDING CONTRACTING
- LAMPRELL ENERGY LTD.
- MC DERMOTT MIDDLE EAST INC.
- M1 CONSTRUCTION LLC SOC
- RALS CONTRACTING LLC
- SUN ENGINEERING CONTRACTING
- S.S. LOOTAH GROUP
- SHAPOORJI PALLONJI MIDEAST LLC
- TAV TEPE AKPEN INVESTMENT CONSTRUCTION AND OPERATIONS - DUBAI BRANCH
- UNEC





PLEASE REACH OUT TO US



+97165431416
+97165263338



www.aremates.com



info@aremates.com



AL RANA EQUIPMENT & MACHINERY TR LLC P.O. Box No. 22817,
Business Tower Building Office Nos. 2701 & 2702, Buhairah, Al
Majaz 2, Sharjah, United Arab Emirates



AL RANA EQUIPMENT & MACHINES TRDG. FZE P.O. Box No.
42462, Plot No. 2F-03, Phase 1 Hamriyah Free Zone, Sharjah,
United Arab Emirates

